



# Thámova 16

## OFFICES AND SERVICES PRICE LIST



[info@officesunlimited.cz](mailto:info@officesunlimited.cz)  
+420 702 278 224

6th floor, Thámova 16,  
Prague 8, Karlín 186 00

# OFFICES AND SERVICES PRICE LIST

## Offices With Indefinite Lease Terms



### OFFICE 1

Net floor area	60 sq. m.
Total floor area	74 sq. m.
Monthly lease with no services	CZK 46,250
Services	CZK 17,020
Total monthly lease including services	CZK 63,270
Capacity	12 people
Current occupancy	leased

### OFFICE 2

Net floor area	28,80 sq. m.
Total floor area	36 sq. m.
Monthly lease with no services	CZK 22,500
Services	CZK 8,280
Total monthly lease including services	CZK 30,780
Capacity	6 people
Current occupancy	leased

### OFFICE 3

Net floor area	35 sq. m.
Total floor area	43 sq. m.
Monthly lease with no services	CZK 26,875
Services	CZK 9,890
Total monthly lease including services	CZK 36,765
Capacity	8 people
Current occupancy	leased

### STUDIO

Net floor area	62,60 sq. m.
Total floor area	77 sq. m.
Monthly lease with no services	CZK 48,125
Services	CZK 17,710
Total monthly lease including services	CZK 65,835
Capacity	12 people
Current occupancy	leased

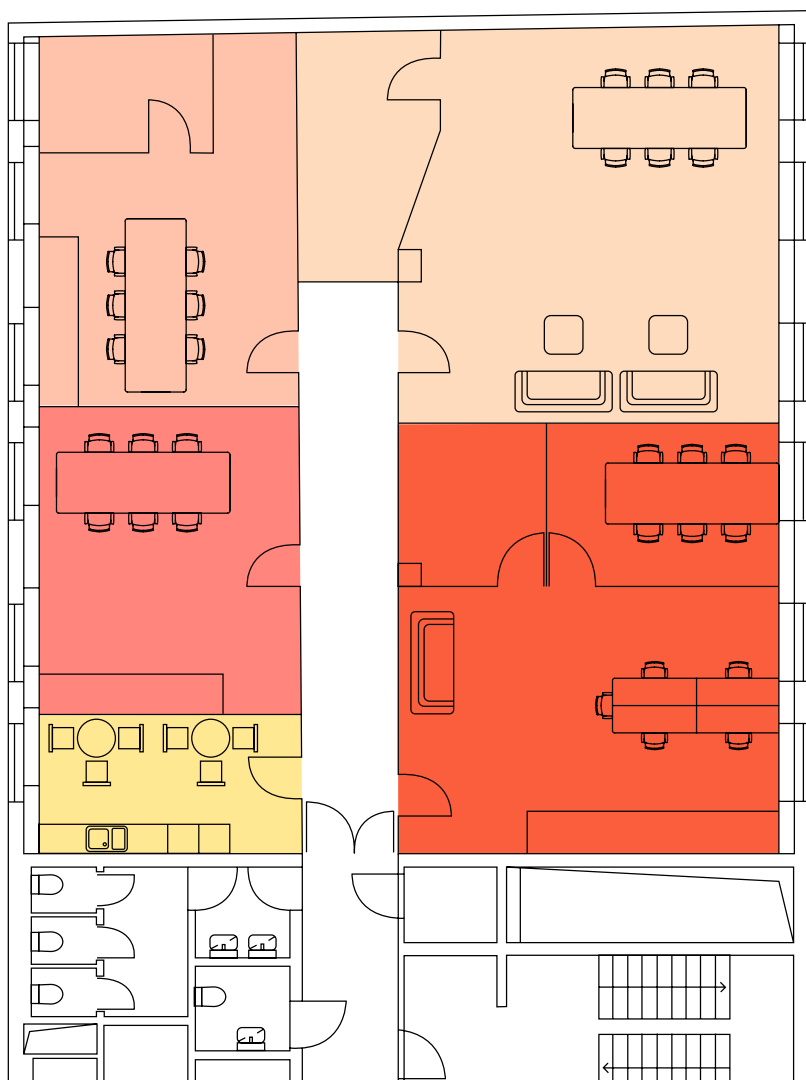
The prices are listed without VAT.



[info@officesunlimited.cz](mailto:info@officesunlimited.cz)  
+420 702 278 224

6th floor, Thámova 16,  
Prague 8, Karlín 186 00

# FLOORPLAN



- private office 1
- private office 2
- private office 3
- studio
- kitchenette

# OFFICES AND SERVICES PRICE LIST



Parking in underground garages	EUR 100 / month / space + services CZK 250 / month / space
Flexi parking Mr. Parkit (210 W x 500 L x 200 H)	For current parking prices, visit <a href="http://www.mrparkit.com">www.mrparkit.com</a>
Private office cleaning services	included in the advance payment for services
Company headquarters	free
Entrance key + chip	free / 2 sets

The prices are listed without VAT.

# PRICE LIST - FURNITURE RENTAL

## Premium



**VITRA chair**  
(Meda, Meda Pro, AM chair, Physix)

CZK 500 / month



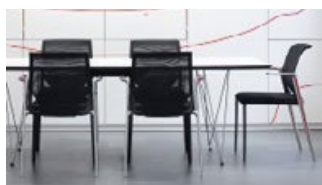
**MASTER&MASTER table**  
Flat Diamond

CZK 750 / table / month  
140 x 70 cm



**VITRA Workit table**

CZK 1,000 / table / month  
360 x 180 cm



**SAD table**

CZK 2,000 / table / month  
400 x 130 cm



**MASTER&MASTER rack**

CZK 1,000 / 1 pcs / month  
Rack 776 x 802 x 290 mm

Furniture rented based on availability.



[info@officesunlimited.cz](mailto:info@officesunlimited.cz)  
+420 702 278 224

6th floor, Thámova 16,  
Prague 8, Karlín 186 00

# PRICE LIST - FURNITURE RENTAL

## Standard



**IKEA chair**  
(LÅNGFJÄLL, HATTEFJÄLL)

CZK 250 / month

---



**IKEA BEKANT table**

CZK 500 / month

---



**IKEA rack**  
(FJÄLKINGE, VITTSJÖ)

CZK 500 / 1 pcs / month  
Fjalkinge rack 118 x 193 cm  
VITTSJO rack 100 x 175 cm

---



**IKEA drawer unit**

CZK 250 / 1 pcs / month

Furniture rented based on availability.